



George Mason University

Center for Resilient & Sustainable Communities (C-RASC)

Dr. Kathryn B. Laskey

Director

Professor, Systems Engineering and Operations Research

C-RASC Approaches

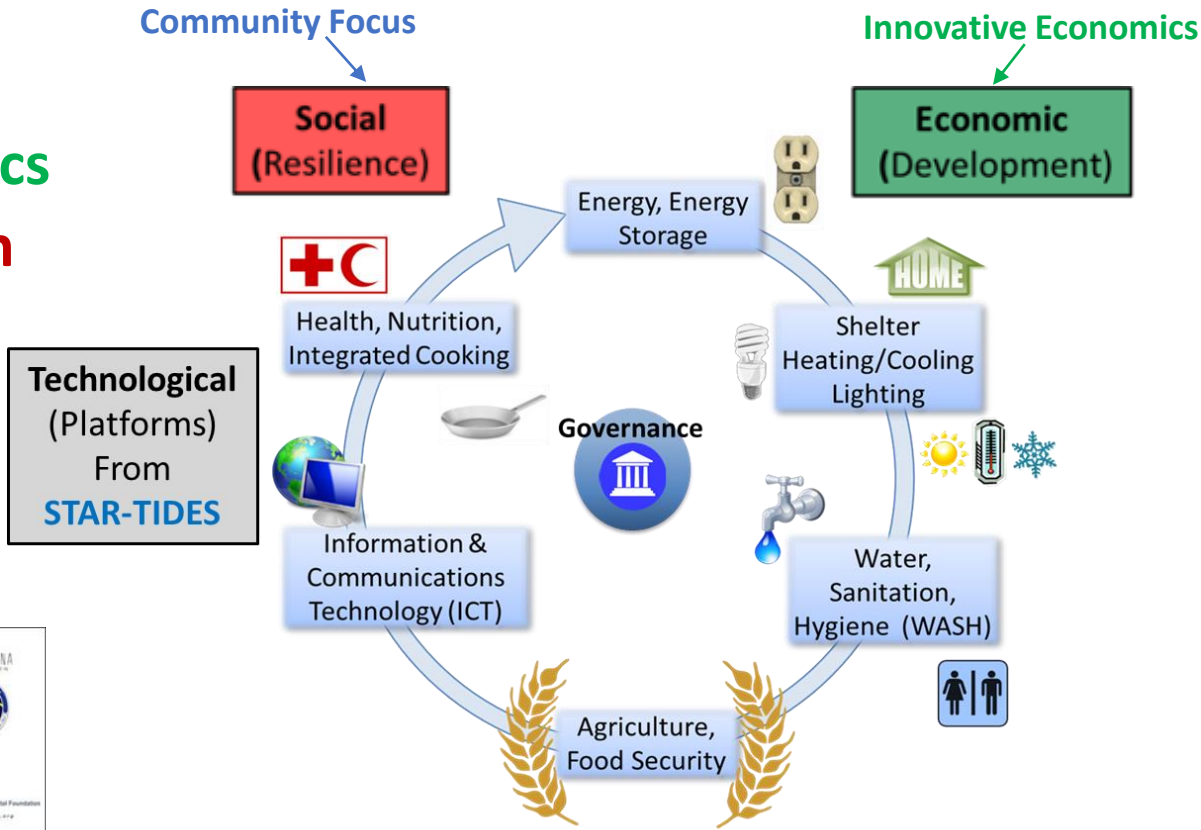
- Build Sustainable Resilience by**
LISTENING to community needs
Encouraging two-way LEARNING
Developing LASTING capabilities
- **Promote Entrepreneurship and Business Development**
 - **Reduce Pressures for Migration & Marginalization**
 - **Improve Disaster Resilience**
 - **Strengthen Critical Infrastructures**



Elements:

- Community Focus
- Knowledge Sharing
- Innovative Economics
- Platform Integration
- Research and Teaching

Trans-Disciplinary Research and Teaching are Key



via STAR-TIDES network

Keys to Success: Narrative; Systems Thinking; Shared Knowledge; Resources; Education; Logistics; Digital Enabling Technologies

Stability/Security ↔ Sustainability

LISTENING, LEARNING, LASTING

Region ↔ Community



Broad Partnerships

• Within University:

- College of Science
- School of Business
- Volgenau School of Engineering
- College of Health and Human Services
- Schar School of Policy and Government
- Carter School of Peace and Conflict Resolution

• Outside partners

Collaborative Opportunities

- Narrative & Storytelling
- Critical Infrastructure Protection
- Conflict Analysis & Resolution
- Business & Economics
- Geospatial Info Systems
- Transport and Logistics
- Entrepreneurship
- Specific Technologies and Engineering Disciplines
- Cybersecurity
- Public Policy
- Sociology
- Public Health
- Education
- Systems Thinking
- Climate Science

Real World Engagements

- **Complex Adaptive Threats** (with Virginia Commonwealth Cyber Initiative)
- **Ethiopian Subsistence Irrigation Project**
- **Appalachia Advancing** (with Shepherd University)
- **Puerto Rico Science & Technology Research Trust** (with STAR-TIDES Latin America core group)
- **Rural Broadband** (with People-Centered Internet)
- **Japan STAR-TIDES Network**
- **15th STAR-TIDES Capability Demo Oct 18-20@GMU**



The goal is to “Make hope possible,
rather than despair convincing”—
Raymond Wilson

Governance and institution-building will be key
Must understand what **dignity, justice and fairness**
mean in whatever culture is at the center of a
particular project—technical solutions alone
are never enough